

NetWay4EWPX

4-port PoE+ Hardened Switch



Altronix NetWay4EWPX Outdoor PoE+ Hardened Switch provides a 1Gb SFP port and four (4) PoE+ (30W) ports. Cameras/edge devices may be located up to 100m from the unit. Embedded LINQ Technology allows you to monitor, control, and report power and diagnostics from anywhere.



NetWay4EWPX

Key Features

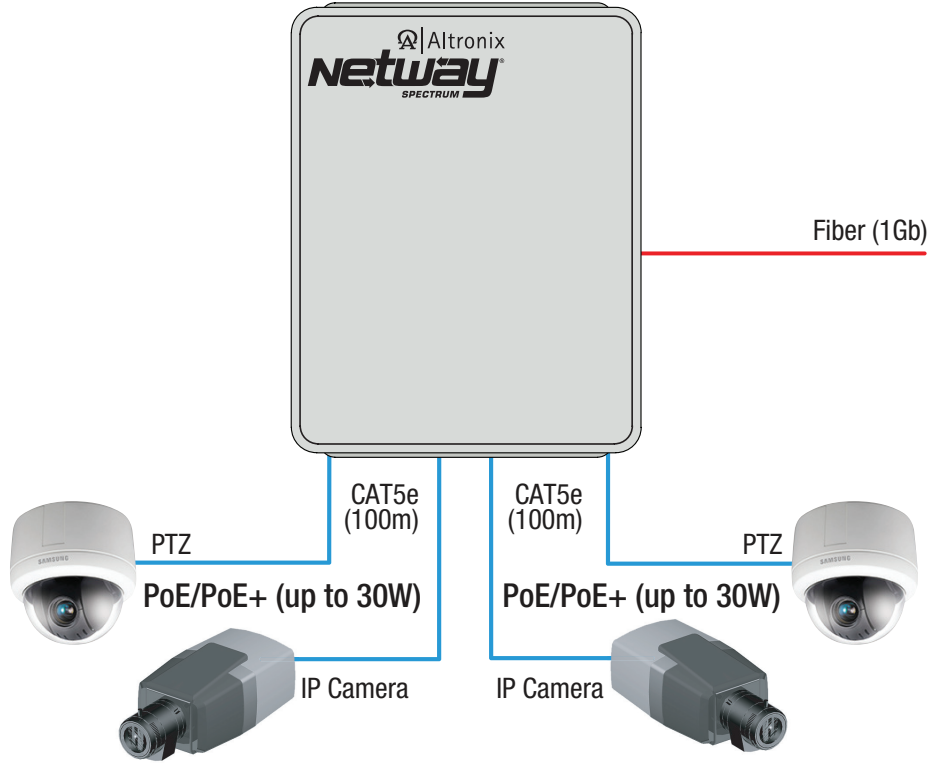
- Four (4) 10/100/1000 Mbps PoE/PoE+ (up to 30W) ports
- IEEE 802.3af (15W) and IEEE 802.3at (30W) compliant
- 120W total power
- One (1) Gigabit SFP port
- NEMA4/4X, IP66 Rated enclosure for outdoor use
- Accommodates four (4) 12VDC/4AH batteries (48V of backup)
- Built-in charger for sealed lead acid or gel type batteries
- Automatic switch over to stand-by battery when AC fails
- PoE activity LED indicators
- UL Listed in the U.S. and Canada
- CE European Conformity
- Lifetime Warranty

Similar products

NetWay4EWP	Outdoor 4-port PoE+ Hardened Switch in NEMA 4/4X, IP66-11 enclosure
NetWay4EWPN	Outdoor 4-port PoE+ Hardened Switch only in NEMA 4/4X, IP66-11 enclosure
NetWay4EPL	4-port PoE+ Hardened Switch with Integral Power on a Backplane
NetWay4EX	Indoor 4-port PoE+ Hardened Switch in NEMA 1 Rated indoor enclosure
NetWay4EB	4-port PoE+ Hardened Switch (board only)

Lifetime Warranty

Typical Application



Accessories (order separately)



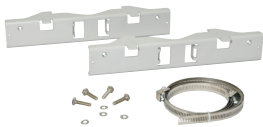
SFP Modules - Hot Pluggable Transceivers

- P1MM Multi-Mode SFP Module for distances up to 550m
- P1SM10 Single-Mode SFP Module for distances up to 10km
- P1AB2K Single Strand SFP Module for distances up to 2km
- P1GCE Copper SFP Module for distances up to 100m



NetWaySP1A

Ethernet over Fiber Media Converter/Repeater for Applications Requiring an Additional SFP (Fiber) Port
NetWaySP1A PoE powered media converter/repeater converts 10/100/1000 Mbps to Fiber (1000Base-X/SX/LX).



PMK2 - Pole Mount Kit

PMK2 pole mount kit is designed to simplify installation of outdoor units. It accommodates 2" - 8"(diameter) poles.



Vent2 - Air Vents For NEMA4/4X Rated Enclosures

Altronix Vent2 air vents ensure efficient air circulation and prevent water condensation in NEMA4/4X Rated Enclosures. Pair of air vents must be mounted per enclosure.

Lifetime Warranty



NetWay4EWPX

4-port PoE+ Hardened Switch



Specifications

Input

Voltage 115VAC, 60Hz, 2.5A or
230VAC, 50/60Hz, 1.3A

Fusing 5A/250V

Power Output

Maximum Power Four (4) 10/100/1000 Mbps
PoE/PoE+ (up to 30W) ports
IEEE 802.3af (15W) and
IEEE 802.3at (30W) compliant
120W total power
Integral surge protection

Fiber Port: One (1) Gigabit SFP port

Indicators (LED)

Individual PoE On LEDs for each port

Individual IP Link status, 10/100Base-T/active LEDs for each port

ALOS LED indicates fiber connection for SFP port

Heartbeat LED indicates proper operation of the unit

LINQ Technology:

Remote network management allows for camera/device reset and monitoring

Provides local and/or remote access to critical information via LAN/WAN

Email and Windows Dashboard Alert notifications report real-time diagnostics

Event log tracks history

Battery Charging

Capacity 4AH/12VDC (4 within enclosure)

Type Sealed lead acid or gel type

Failover Upon AC loss, instantaneous

Batteries are sold separately

Agency Listings

UL/cUL UL60950-1
(Information Technology Equipment)

UL60950-22
(Information Technology Equipment
to be installed Outdoors)

CE European Conformity

Physical and Environmental

Dimensions (H x W x D)

Enclosure: 17.53" x 15.3" x 6.67"
(445.3mm x 388.6mm x 169.4mm)

Shipping: 21.375" x 14.5" x 9.5"
(542.9mm x 374.7mm x 241.3mm)

NEMA 4/4X, IP66-11 Rated enclosure for outdoor use

Accommodates four (4) 12VDC/4AH batteries (48V of backup)

Weight (approx.)

Product: 15 lb. (6.8 kg)

Shipping: 17.5 lb. (7.9 kg)

Temperature

Operating:
60W: - 40°C to 75°C (- 40°F to 167°F)

75W: - 40°C to 70°C (- 40°F to 158°F)

100W: - 40°C to 55°C (- 40°F to 131°F)

120W: - 40°C to 45°C (- 40°F to 113°F)

Storage: - 40°C to 85°C (- 40°F to 185°F)

Relative Humidity 85% +/- 5%

BTU/Hr (approx.) 61 BTU/Hr.

Operating Altitude: - 304.8 to 2,000m

Lifetime Warranty

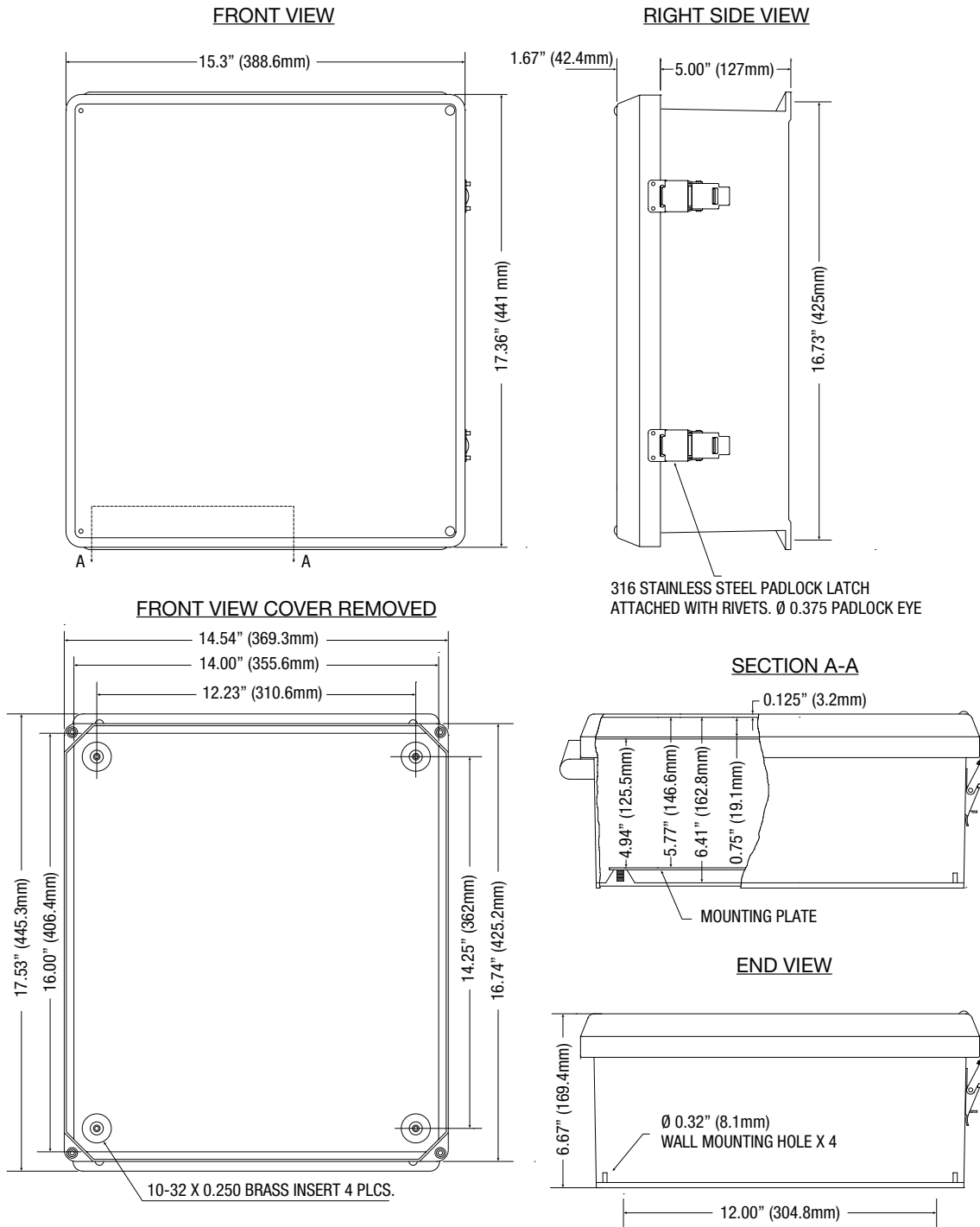
Altronix Corporation | 140 58th St | Brooklyn, NY 11220 USA

phone: +1 718.567.8181 | fax: +1 718.567.9056 | email: info@altronix.com | www.altronix.com

Dimensions and Drawing

Dimensions (H x W x D approximate)

17.53" x 15.3" x 6.67" (445.3mm x 388.6mm x 169.4mm)



Lifetime Warranty

Altronix Corporation | 140 58th St | Brooklyn, NY 11220 USA

phone: +1 718.567.8181 | fax: +1 718.567.9056 | email: info@altronix.com | www.altronix.com